

TE HOKINGA O

Ruia Morrison

MBE

KI WIMBLEDON
2013



AMTA COMMEMORATIVE
TOUR ITINERARY



OVERSEAS CONTACTS

Ngāti Ranana Cultural Group –

Esther Jessop, Heta Gardiner, Joy Fenikowski, Natasha

Peter MacDonald

Home :02087677138 / Mobile: 07717124283

Peter lives just down the road from Wimbledon, and is the son Enoka MacDonald (NZ Māori 1947, Halifax RL 1948-1951) and nephew of the legendary Jack Hoani MacDonald.

Ross Munroe

Ruia coached Ross as a junior in Rotorua. Ross now lives in Richmond, London and has made a donation in support of Ruia's trip to Wimbledon. He has the clothing contract for the next Rugby World Cup. Ross will join us at Wimbledon and will host our group for a BBQ at his home. +44 7738715062

Honor Godfrey

Museum Curator AELTC

Church Road Wimbledon SW19 5AE

T + 44 (0)20 8879 5603 / honor.godfrey@aeltc.com

Ali Ensor

PA to Chief Executive AELTC

D: 0208 487 7059

Richard Grier

Championships Director

All England Lawn Tennis Club (Championships) Ltd

Church Road, Wimbledon LONDON, SW19 5AE

Julie Archer

jarc@aeltc.com we will make up a suitable photopass that will allow her access to the Last 8 Club during The Wimbledon Championships

Christine Tostevin

CTos@aeltc.com Tel: +44 (0)20 8944 1066

Jenny Spruill (USA)

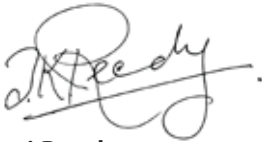
*Former Wimbledon player, USA based, long time friend of Ruia –
0207 351 3605*

Tēna Koutou o Te Ao Whānui

Tēnei ra mātou o Te Tēnehi Māori o Aotearoa e kawē atu nei i tenei toa, i a Ruia Morrison, kia takahi i nga pārae o te riri i ona ra i Wimbledon.

Greetings to all

Aotearoa Maori Tennis Association is indeed proud to be returning Ruia Morrison a former champion of New Zealand to her former battle grounds at Wimbledon.



Ta Tamati Reedy KNZM
Kaumātua AMTA

The rationale behind sending Ruia Morrison back to Wimbledon came about following a gathering of our Māori Tennis Seniors group on the Gold Coast in 2012.

The feeling of the occasion convinced me to announce that evening that we, the Association, should send Ruia back to Wimbledon in 2013, to celebrate her achievements some 55 years back and to enable Ruia to revive past friendships with other past Wimbledon greats.

Ngā mihi, nā



Richard (Dick) Garratt
President AMTA

RUIA MORRISON MBE ACHIEVEMENTS

NZ Junior Titles

U/18 Singles	1954
U/18 Doubles	1954

NZ Senior Titles

Open Singles	1956, 58, 59, 60, 62, 64
Open Doubles	1955, 56, 58, 59, 61, 62, 64
Open Mixed	1959

Māori Tennis Titles

Junior Singles	1950
Open Singles	1952, 58, 65, 70
Open Doubles	1958, 65, 70
Open Mixed	1952, 65, 70

Regional Titles

North Island Titles	6
South Island Titles	2
WD & HO Wills - Auckland	1959, 60

International Titles

Guildford (England)	
Singles	1959
Doubles	1959
Mixed-Doubles	1959

Representative Teams

1958 NZ Māori Womens Team versus Australia
1965 Federation Cup Team - Player & Captain
1972 Federation Cup Team - Captain

Grand Slam Tournaments

Australian Open
French Open
Wimbledon
US Open

International Events

1958 London Grass Court Championships
1959 Toured Singapore, Ceylon, Kuwait and Bahrain with the famous Maria Bueno



Fred Perry & Ruia
1970 Whakarewarewa
Marae



1956 Wimbledon fundraising
Auckland Town Hall



69 Stanley St v
Billie Jean King



Ruia & Eliz Terry 1965 Fed Cup



Ruia 1957 Cumberland 1st
tournament on English soil

Ruia & Ashley Cooper (Aust) 1957 Stanley St.



1960 Wimbledon Doubles



1958 Ruia in Teddy Tingling dress (Wgtn)



2006 Ruia & Kelly Evernden (AMTA 80th)

TOUR PARTY PROFILES



Sir Tamati Muturangi Reedy *KNZM, Ngāti Porou*

2

Emeritus Professor Sir Tamati Reedy - AMTA Life Member and kaumatua of the Association. Tamati was a former Māori All Black and East Coast/Poverty Bay rugby rep. Of late, he has rekindled his passion for tennis, winning the Māori Tennis Super Singles. He is twice winner of the Tennis NZ Seniors Teams Event.



Lady Tilly Te Koingo Reedy, *Ngāti Porou*

3

A former teacher, Tilly has spent her life in the public service and education sector. She is a vigorous supporter of husband Tamati's vocation. Tilly stands alongside Tamati as a respected kaumatua of the Association and is a staunch supporter of Māori youth in tennis.



David Goldsmith, *Ngāti Porou*

4

First played in the NZ Māori Lawn Tennis Champs in 1954 in Dunedin, winning the U/18 singles & doubles. David is a recent AMTA Seniors Champion, winner of the 2013 NZ Seniors Teams Event. Now retired, David is a former school principal, Ministry of Education Senior Manager and now a part time education consultant. He is an AMTA Life Member and member of Saint Peters Tennis Club (Hamilton).



Te Awa Whakawhitirua Baker, *Te Arawa, Ngāti Tūwharetoa*

5

'Whiti' is the younger sister and official chaperon to Ruia Morrison. She is a retired hospitality manager.



Dinny Mohi, *Te Arawa, Ngāti Tūwharetoa*

6

Former Māori All Black & Bay of Plenty rugby rep. Māori Seniors Tennis Champion and Rotorua Tennis Club member. Dinny is a former forestry/mill manager who is currently enjoying retired life in Kaharoa, Rotorua.



Val Mohi, *(Manawatu)*

7

Former softball pitcher for Manawatu and a B grade badminton player, Val is enjoying retired life on her and Dinny's lifestyle block in Kaharoa, Rotorua. She is a member of the Kaharoa Tennis Club.



Desrae Garratt, *Ngāi Te Rangi, Ngāti Mutunga*

8

Mangere Combined Tennis Club (committee & Life Member) AMTA Committee member. NZ & Auckland Tennis Umpires Association Referee. 1999 NZ Seniors Singles & Mixed Champion. Current administrator, Māori Sports Awards.



Richard (Dick) Garratt, *Ngāi Tūhoe*

9

Mangere Combined Tennis Club (President & Life Member), AMTA President & Life Member. 1996 NZ Seniors Singles Champion. Former Auckland Maori Rugby rep. President Tennis Auckland (2007). Currently, CEO Māori Sports Awards Charitable Trust.



Harry Tawhai, *Ngāti Kahungunu*

10

Papatoetoe Tennis Club (President & Life Member) AMTA Treasurer & Life Member. 2013 NZ Masters Singles, Doubles and Mixed Champion.



Geoff Kaye-Ivitu, *Ngāti Maniapoto, Te Whānau-ā-Apanui, Cook Island*

11

Rotorua Tennis Club (President). Former Rotorua & Police Rugby rep. Geoff has been a police officer for 30yrs and is the current Police Prosecutor at Tokoroa.



Leona Kaye-Ivitu, *Te Arawa, Ngāi Tai, Ngāpuhi*

12

Rotorua Tennis Club (committee member). Former NZ & Rotorua Junior Tennis Member. NZ Māori & Queensland Seniors Champion. Current Sports Co-ordinator at Western Heights High School, Rotorua.



Kevin Neil, *Ngaa Rauru Kītahi*

13

Wanganui Tennis Club and AMTA member. Kevin farm's a small lifestyle block in Waverley, 44km north-west of Wanganui.



Noeline Walsh, *(Opotiki)*

14

Noeline has played and administered netball since her school days and has gone on to represent Eastern Bay of Plenty, Auckland and Counties. As a former school teacher, she has had active service in Opotiki. As a keen sports person, she is looking forward to the opportunity of supporting Ruia on this tour to Wimbledon. Currently, a travel coordinator - planning and escorting tours for many sporting codes.



Kay Millar, *Te Rarawa*

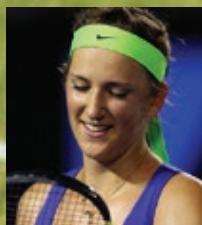
15

Daughter of Noeline and the late Pat Walsh. Former NZ U/21 Netball representative. Currently enjoys running and playing interclub tennis for Lake Pupuke Tennis Club, Takapuna. Kay is a Chartered Accountant based in Takapuna.

WIMBLEDON



24 JUNE - 7 JULY 2013



The area north of the Centre Court became known as Aorangi Park after the Club purchased the 11 acres from John Barker Ltd. of Kensington in 1967 and subsequently granted a lease to the New Zealand Sports and Social Club.

Aorangi, meaning 'Cloud in the Sky', is the Maori name for Mount Cook.

ITINERARY

Day 1 Fri 21 June

- 12.10pm / 1210 depart Auckland to Singapore SQ286 (Singapore Airlines)
- Arrive Singapore 1900 - 7.00pm (Fri 21 June)
- Upon arrival and clearing customs in 30 minutes you will be transferred to the Swissotel Merchant Court Hotel, 20 Merchant Road and adjacent to Clark Quay where the night life of bars and restaurants never sleeps. Or step out to the Orchard Road shops.
- The hotel amenities feature an outdoor pool including a fitness centre. Wellness facilities include Jacuzzi, sauna and a relaxing massage can be requested.

Day 2 Sat 22 June

- Morning free, afternoon sightseeing tour of Singapore, early evening check-in for flight to London - Depart Singapore flight SQ322- departing at 2330 (11.30pm).

Day 3 Sun 23 June

- Arrive London 0555 - 6.00am Heathrow Airport and transferred by coach to The Premier Inn Hammersmith –
- Includes Oyster Card pass.
- 255 Kings street Hammersmith Ph: 00871 527 8660 Situated only 30minutes from Central London by tube the high rise building has panoramic views of Wembley Stadium and the Thames.
- The restaurant and bar serves traditional and contemporary dishes, and we have full English breakfast included daily in our tariff.
- Entry to the underground Ravenscourt tube station on the District Line is over the road and Twickenham Stadium a short walk away.
- Free afternoon to explore the Hammersmith Park and Mall.
- 5.45pm Pre-dinner drinks and group meeting, compliments of Skytrain Lion World Travel.

Day 4 Mon 24 June

- Full day Sightseeing by coach around London with Blue Badge Guide.
– includes:
- 10am – 11am Visit to NZ House to meet with the NZ High Commissioner - Sir Lockwood Smith.

Day 5 Tues 25 June

- Transport to Wimbledon by London Tube Rail, queue for day ground passes only.
- Jenny Spruill has offered to show us around the All England Club once we are through the gates.

Day 6 Wed 26 June

- Transport to Wimbledon by London Tube Rail, queue for day ground passes only.
- Jenny Spruill has offered Desrae and I time on court one, and this can be shared with the rest of the group throughout the day.

Day 7 Thurs 27 June

- Coach for full day sight-seeing at Hampton Court Palace and garden, then on to Clondon Park near Richmond to visit the Wharenui - Hinemihi.

Day 8 Fri 28 June

- Wimbledon (ground passes only) Dick has purchased 15x tickets (from the All England Club) to be collected from the COBO Ticket Collection at Gate 5 (passport for identification).

Day 9 Sat 29 June

- Group Dynamics Change – Ruia and Whiti staying on until the Thursday with Jenny Spruill. Noeline and Kay are going fishing in Cornwall. David and Harry will return home on the Monday. Kevin Neill meets up with his kiwi mate for a road trip around the UK. Geoff, Leona, Desrae and Dick travel to Paris for a few day's then return home from there. Tamati and Tilly, Dinny and Val, to take various tours around Europe.

Day 10 Sunday 30 June

- Ruia and Whiti to relocate to Jenny Spruill's residence.

Day 11 Monday 01 July.

- David Goldsmith, Harry Tawhai, Noeline Walsh and Kay Miller - depart London to Auckland via Singapore arrive Auckland Wednesday 1050 / 10.50am 3 July.

Noeline (Skytrain Travel) will be including in your travel package an Oyster Travel Card (Similar to the Hop card in NZ).

The oyster card is valid on the Tube, bus, DLR, tram and some National Rail services.

This will be loaded with 20 GBP value and can be topped up as required. When you no longer wish to use it the credit amount is refunded at any ticket office.

The pass is swiped as you enter a station or terminal and swiped again as you exit. The value of the trip automatically is deducted from the credit on the card.

The advantage of using the Oyster card is that it eliminates the ticket office queues and is prepaid so no need to have suitable change for the ticket issuing vendor machines.



level 16, 135 Albert St Auckland (formerly ASB Bank Centre)

Freephone: 0800 277 477

Email: Noeline@skytrain.co.nz

***For all travel arrangements
phone 09 9215100 for a friendly
experienced consultant***



**SINGAPORE
AIRLINES**

PREMIER INN, LONDON HAMMERSMITH

255 King Street,
Hammersmith,
London W6 9LU
T: 0871 527 8660*
+44 1582 567890
F: 0871 527 8661



DOLLAR CONVERSION

GPP	NZD	NZD	GPP
0.50	0.98	1.00	0.51
1.00	1.93	2.00	1.03
2.00	3.90	5.00	2.56
5.00	9.75	10.00	5.13
10.00	19.51	20.00	10.25
20.00	39.01	50.00	25.63
50.00	97.53	100.00	51.27
100.00	193.34	200.00	102.53

EUR	NZD	NZD	EUR
0.50	0.83	1.00	0.60
1.00	1.66	2.00	1.21
2.00	3.32	5.00	3.02
5.00	8.29	10.00	6.03
10.00	16.58	20.00	12.06
20.00	33.16	50.00	30.16
50.00	82.90	100.00	60.31
100.00	165.80	200.00	120.63

FUNDRAISING

AMTA FUNDRAISING

On behalf of Ruia Morrison and Aotearoa Maori Tennis Association we thank the following for their donations towards Ruia's return trip to Wimbledon:

K. Costain, Lynda Finn, Virginia Horrocks, Alem Trust, Moana Whaanga, TJ Goulding, E Chadwick, Linda May Standing, R Staham, FR Dixie, Jim Mitchell, Terry & Geoff Kaye, Norm & Pam Sowter, Harry Tawhai, AMTA Seniors, Liz Ebbett, CP Barfoot, Garratt Whanau, Kenwood Trust.

To those who have donated anonymously we also express our thanks.

IWI AND WHANAU SUPPORT

The following organisations and Whanau have contributed by way of fundraising ventures, grants and personal donations:

*Rotorua Citizens Club – Karaoke contest
Ngati Whakaue Education Endowment Board - donation
Pukeroa Oruawhata Trust - donation
Gourmet Chinese Restaurant – luncheon*

Shane McDowell, Gay McRae, Aroha Yates, Smith, Mihaere Kirby, Materoa Mitchell, Kite Tene Kereopa, Winnie Morrison, Pihopa Kingi, Jimmy Morrison, David, Margie Dorset, Mei Clarke, Ruhi, Anne Malcom Tapsell, Maurice & Toia Walden,

*Thank you one and all for your kind support
'Ngā mihi nui ki tēna, ki tēna o koutou mo a koutou awhi, tautoko
ano nga mihi nui*

ADDRESSES & SIGNATURES

WĀHI NOHO ME NGĀ WAITOHU

ADDRESSES & SIGNATURES

WĀHI NOHO ME NGĀ WAITOHU



Four Winds
FOUNDATION LIMITED
GAMING GRANTS FOR YOUR COMMUNITY

www.amta.co.nz

